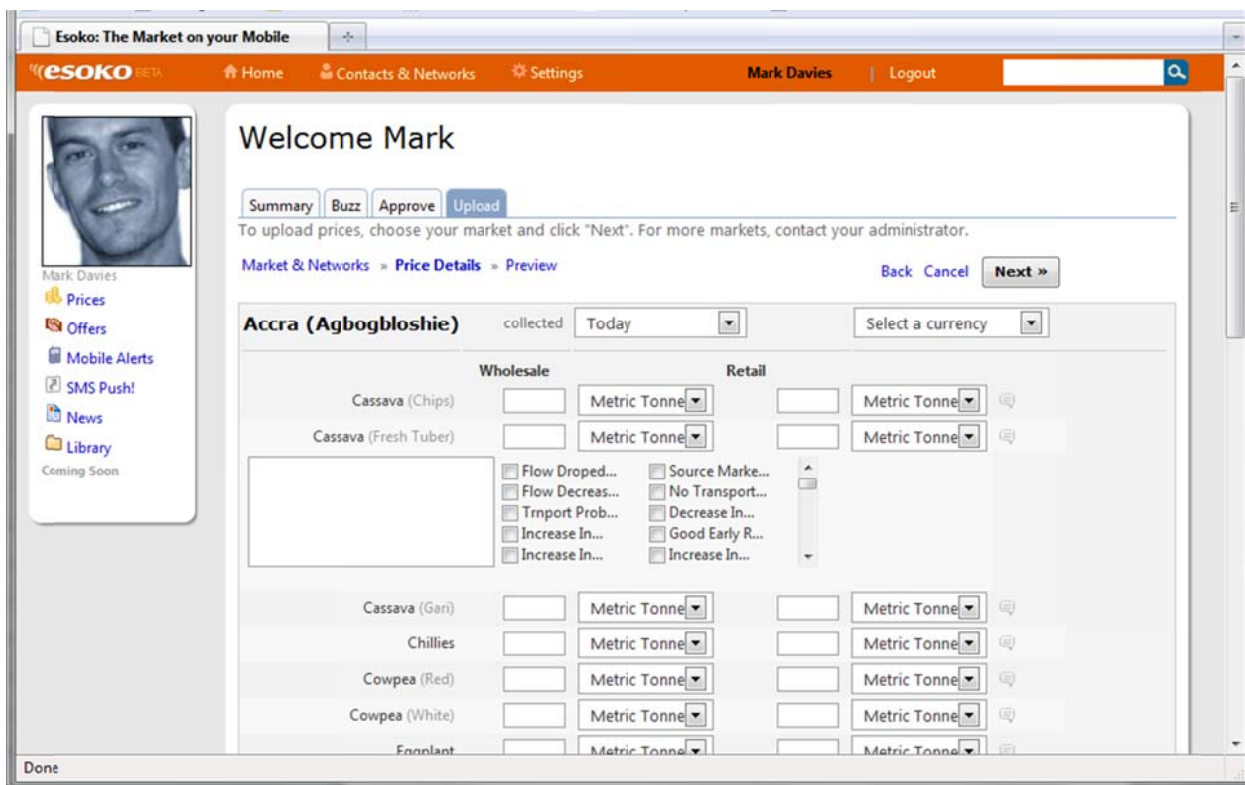
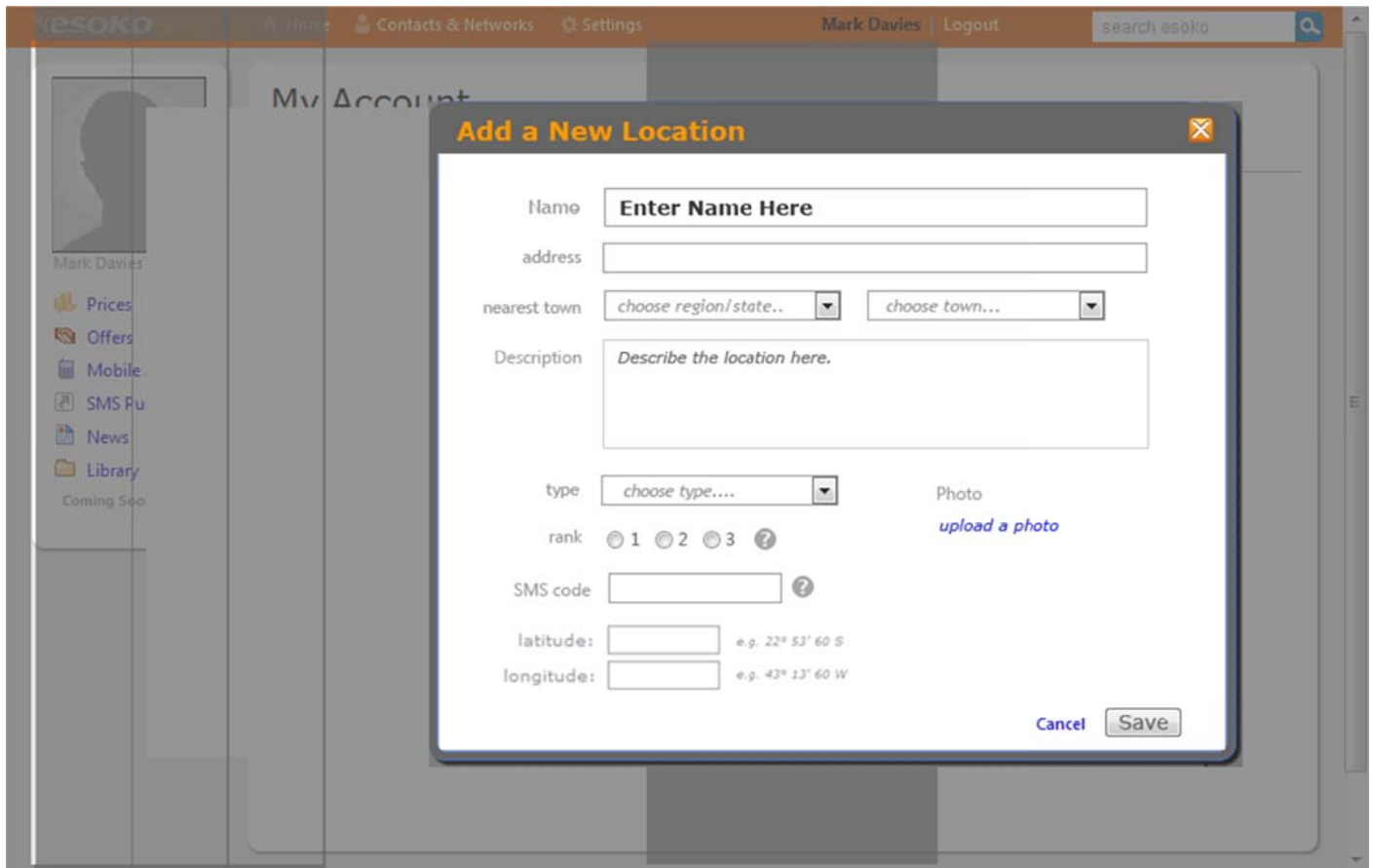


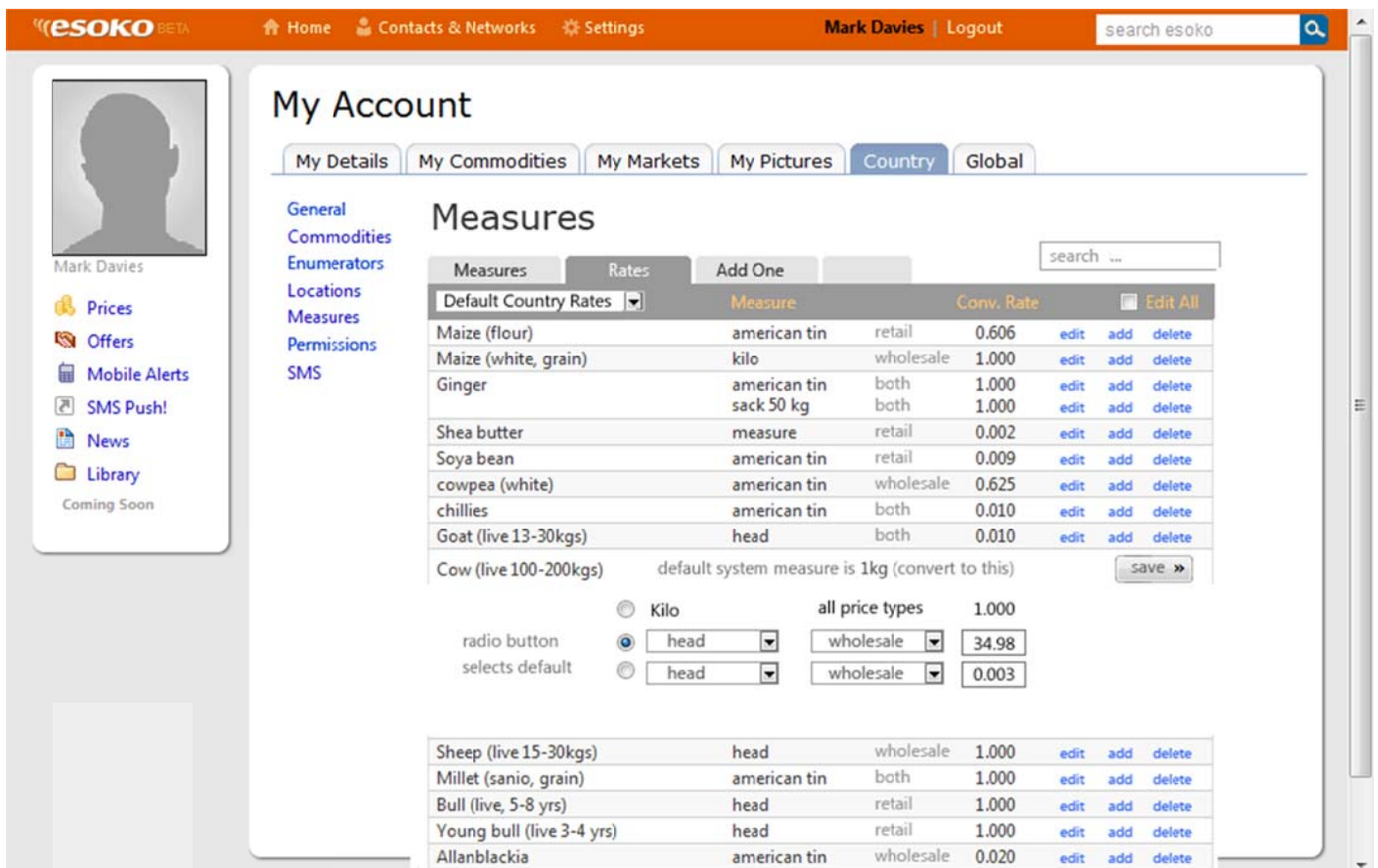
User would select which location/store they are uploading for... you can have five or more for that person and can add more at any time.... Here we're showing markets, but you can just list the shops mapped to that user.



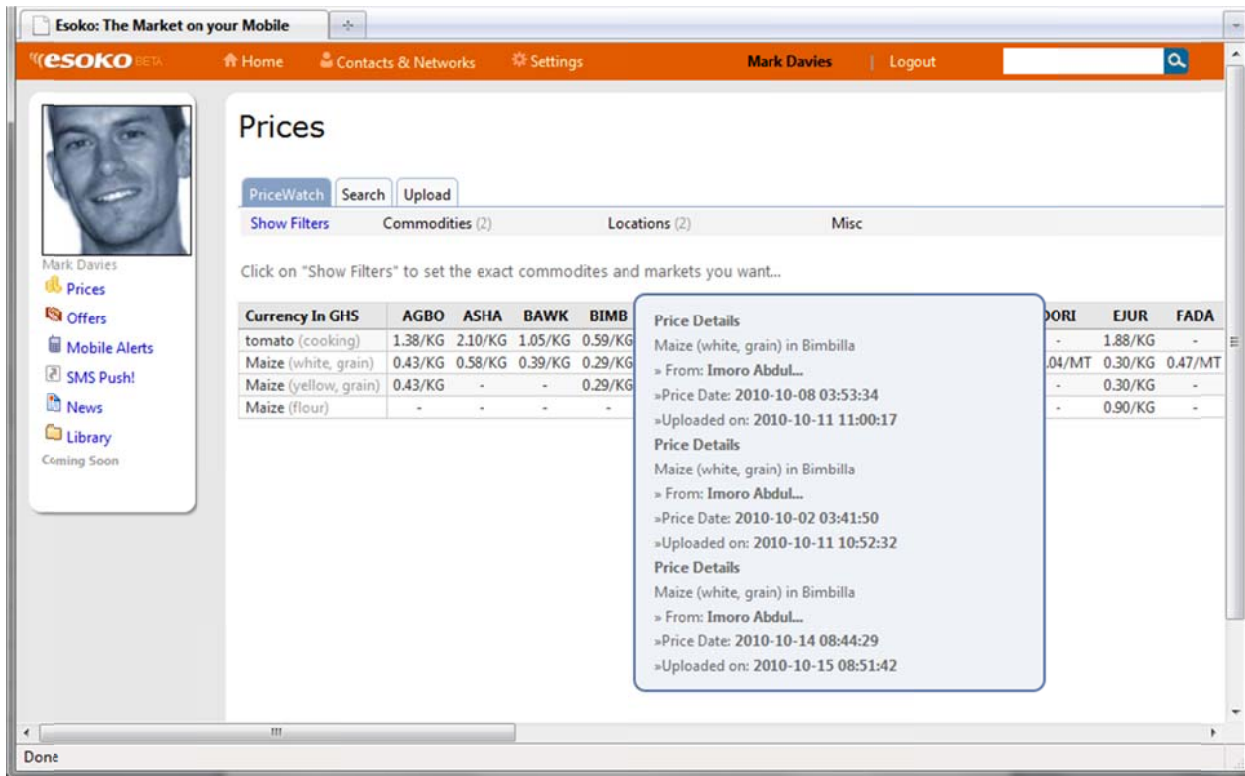
7a. Once at a location, the enumerator can upload prices for the five or six commodities and even tag them with custom labels for LRP (does this cover toxins and other news info?)



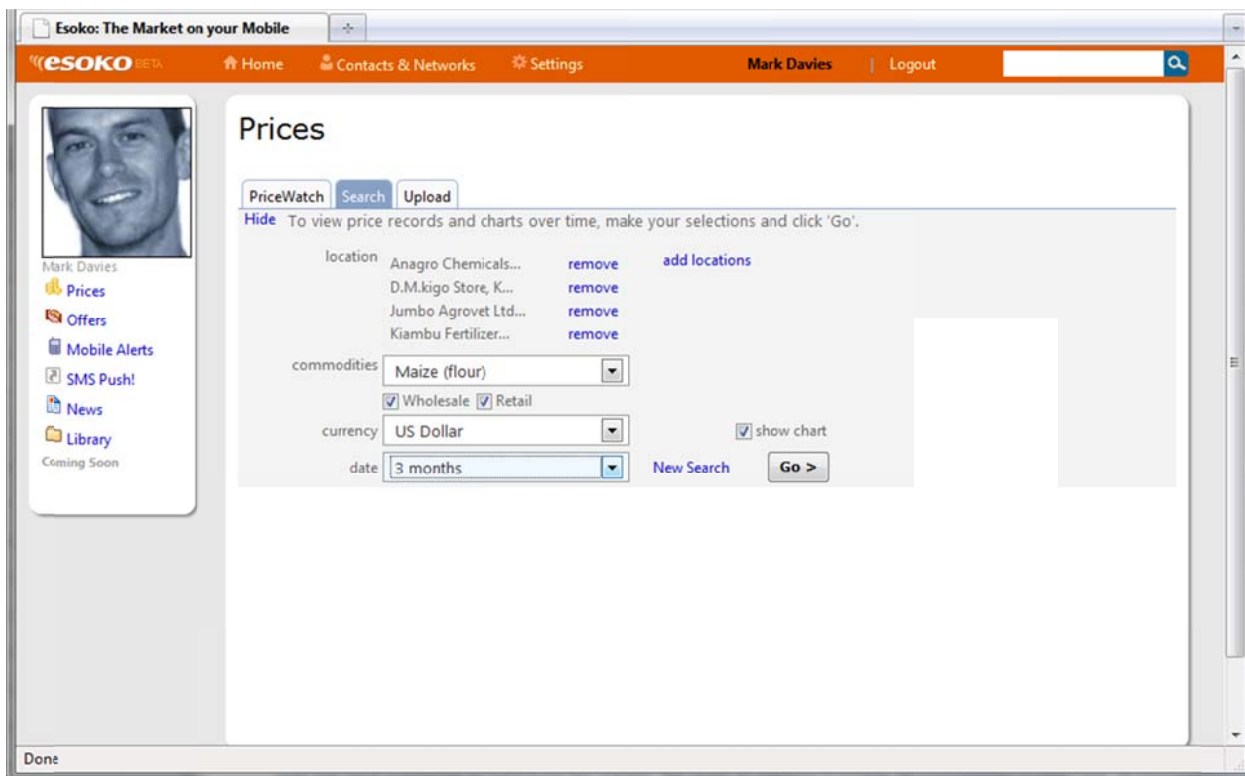
2a. Adding a new store is done here. We can add some custom fields here to track volumes/production etc. and to map a store to a person.



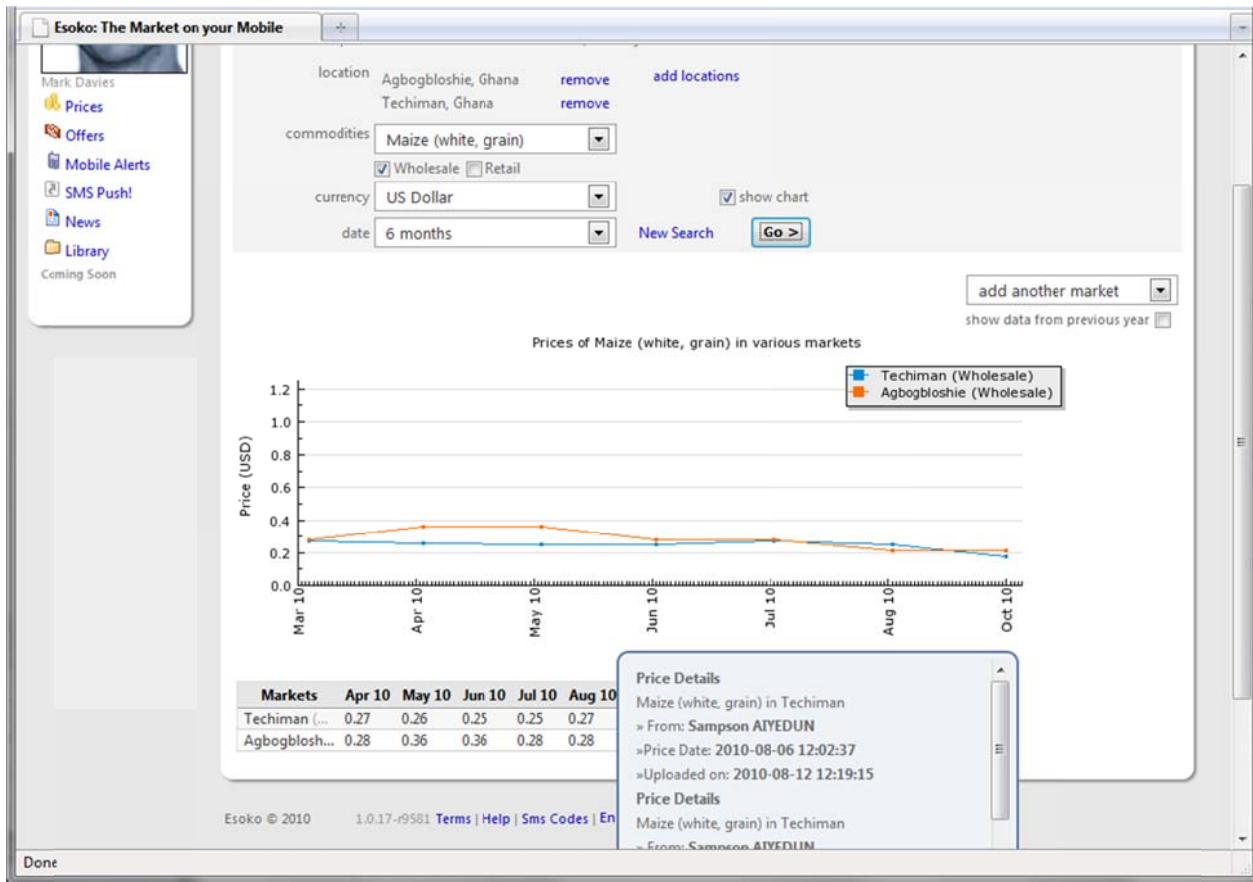
6a. You can set custom measures for a country or specific location (March).



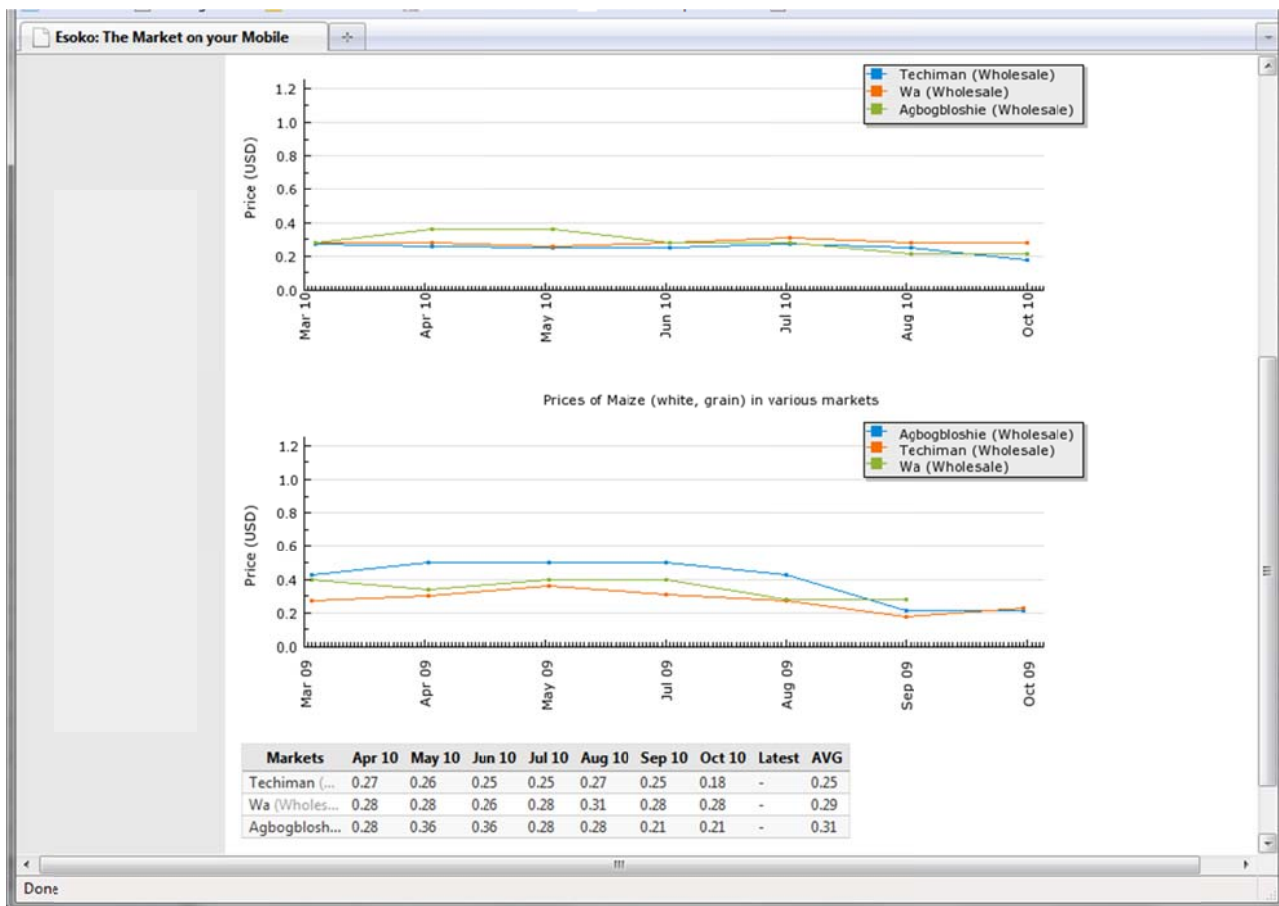
7b. Rollovers can show specific data on a prices... how many records, each individual data, who uploaded, what location, and any tags/comments.



8a. You can select multiple locations one commodity, or reverse.

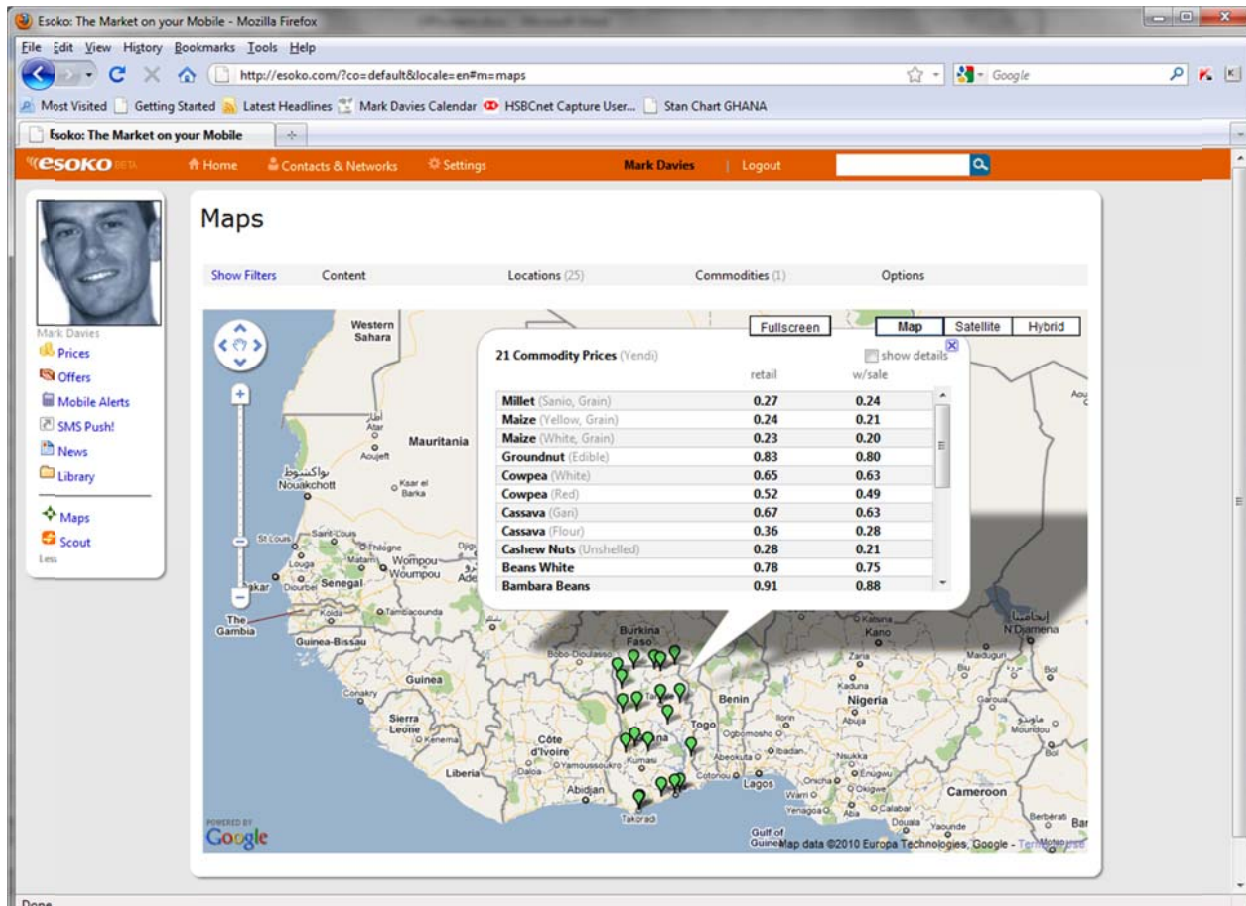


8b. Time series data over time... one commodity in two markets. You can compare markets in different countries.



8c. Showing current year and last year.





9a. Mapping prices or offers onto google maps.



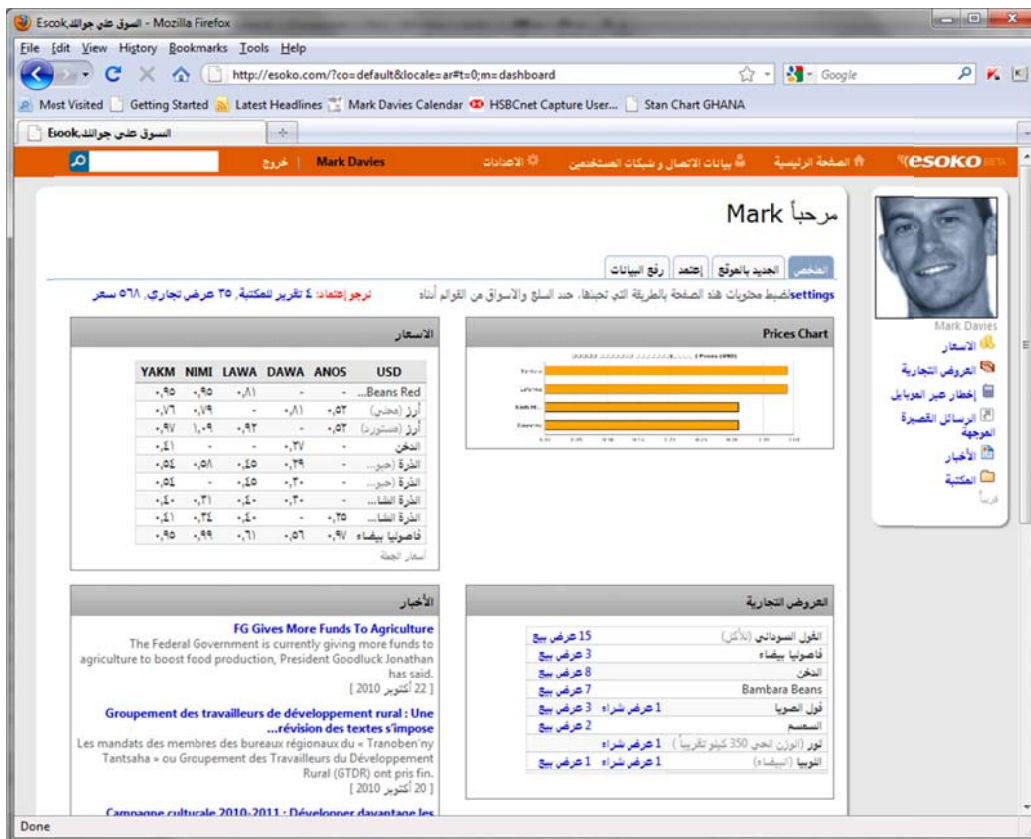
9b. Maps showing prices on Android phones.



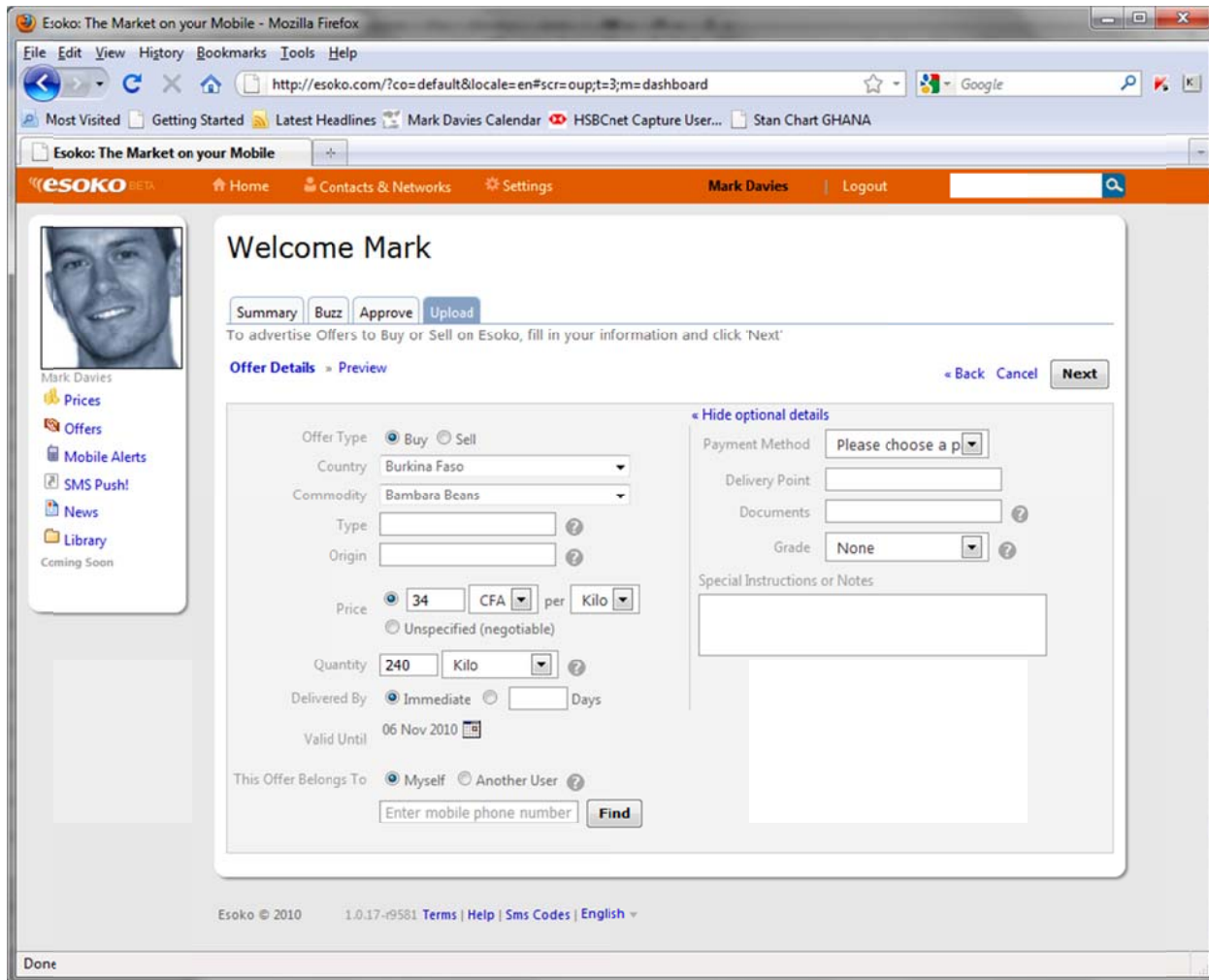




13a. anyone with a JAVA phone (\$60) can upload prices using an easy form interface via SMS.



14a. Site is available in Arabic, French, English and Portuguese.



15a. You can upload a bid/offer into the system. We could add a few other fields to track bids and final transaction amount. I would guess with few volumes this may be easier using Excel.



## Stock & Flow

Stock Flow Upload

Show Filters Commoditys (All) Locations (1) Networks (All) Misc

See who's stocking what. Customize offers by clicking on "Show Filters" or post your own through "Upload".

customize the chart:  
 all commoditys  
 all locations

	Maize	Sorghum	Urea	Millet	Rice	Millet	Rice
Omdurman	54,345 kg	45 lt	35 kg	467 mt	45 lt	467 mt	45 lt
Khartoum	54,345 kg	44 kg	35 kg	467 mt	45 lt	467 mt	45 lt
Juba	54,345 kg	44 kg	35 kg	467 mt	45 lt	467 mt	45 lt
Dongola	54,345 kg	44 kg	35 kg	467 mt	45 lt	467 mt	45 lt
Karima	54,345 kg	44 kg	35 kg	467 mt	45 lt	467 mt	45 lt
Wadi Haifa	54,345 kg	44 kg	35 kg	467 mt	45 lt	467 mt	45 lt
Karima	54,345 kg	44 kg	35 kg	467 mt	45 lt	467 mt	45 lt
Wadi Haifa	54,345 kg	44 kg	35 kg	467 mt	45 lt	467 mt	45 lt
Karima	54,345 kg	44 kg	35 kg	467 mt	45 lt	467 mt	45 lt
<b>Total</b>	<b>254,345 kg</b>	<b>344 kg</b>	<b>344 kg</b>	<b>344 mt</b>	<b>344 lt</b>	<b>344 mt</b>	<b>344 lt</b>

alerts chart it! download email rss homepage

16a You can report on stocks and volumes...

## Stock & Flow

Stock Flow Upload Analysis

Upload > Chooser > Data > Preview cancel Next >>

### Maize (White, Flour)

Tagged to PeeWee Group, Cereals Connect

Sat, 22 Nov

Elamein Trading Co.	25	head	<input type="checkbox"/> comments
Alemu Distributors	1,345	head	<input type="checkbox"/> comments
Obama Processing Company	25	metric tonnes	<input type="checkbox"/> comments
Omdurman Market	1,345	american tin	<input type="checkbox"/> comments
Davies Importers	450	sacks (80kg)	<input type="checkbox"/> comments
Sarah Selling Co.	800	sacks (80kg)	<input type="checkbox"/> comments

comments for all:

Stocks remain generally unchanged with the exception of sheep due to the seasonal religious festivals which has added new demand and supplies are low.

- drought
- transport
- disease
- oversupply
- politics
- war
- weather

cancel Next >>

16b. You can easily enter quantities of stock in different locations (also via web or sms)

price\_upload\_template (2).xls [Read-Only] [Compatibility Mode] - Microsoft Excel

**LRP Program Burkina Faso**

Cornell University  
Charles H. Dyson School of Applied Economics and Management

CROP	CURRENCY	MEASURE	Shop 1		Shop2		Shop3		Shop4		Shop5		Shop6	
			Mon May 14	Mon May 14	Mon May 14	Mon May 14	Mon May 14	Mon May 14	Mon May 14	Mon May 14	Mon May 14	Mon May 14		
			avg	min	avg	avg	avg	avg	avg	avg	avg	avg	avg	
Maize Flour	CFA	kg	650	700	700	700	700	800	800	800	800	800	800	
Maize Grain	CFA	kg	290	400	400	400	400	500	500	500	500	500	500	
Millet Flour	CFA	kg	700	900	900	900	900	1000	1000	1000	1000	1000	1000	
Soya	CFA	kg	290	400	400	400	400	500	500	500	500	500	500	
Cooking Oil	CFA	kg	700	900	900	900	900	1000	1000	1000	1000	1000	1000	

13c. Upload via Excel. Probably the easiest. A fixed/locked sheet that can simply be emailed in and the data is automatically uploaded to the database. Can also be used for secondary data suppliers. Hidden fields identify the network, enumerator, commodity and location ids. Price type (wholesale/retail).